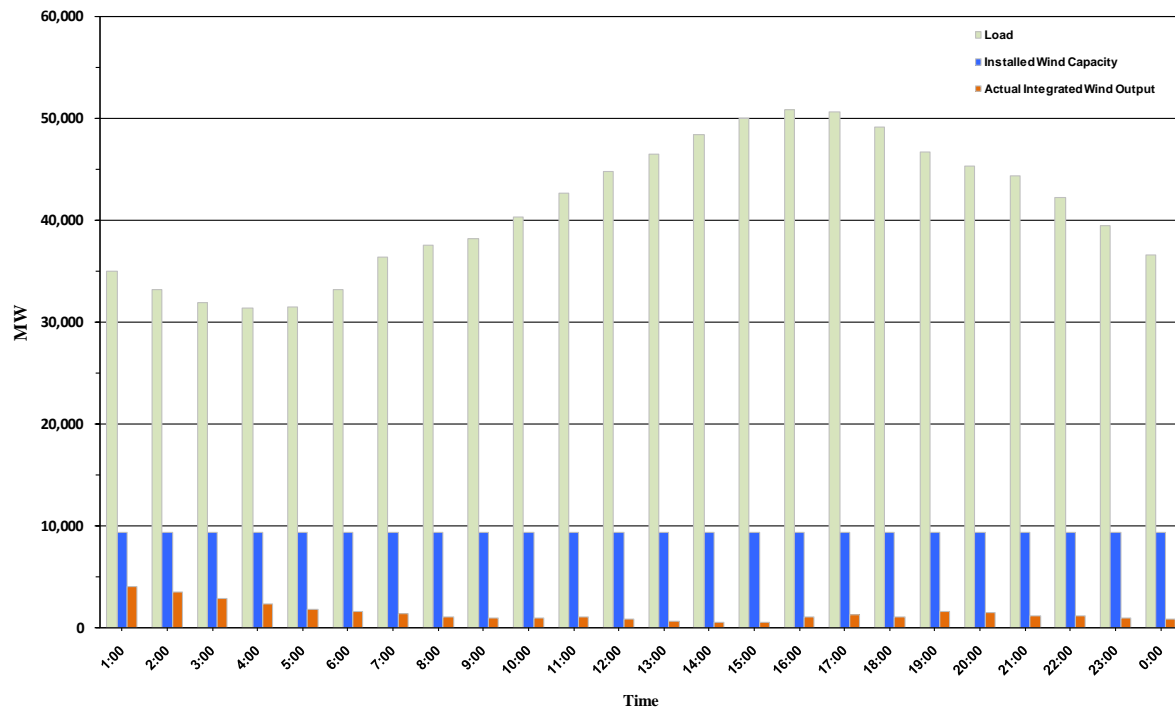




ERCOT Grid Operations Wind Penetration Report: 09/24/10

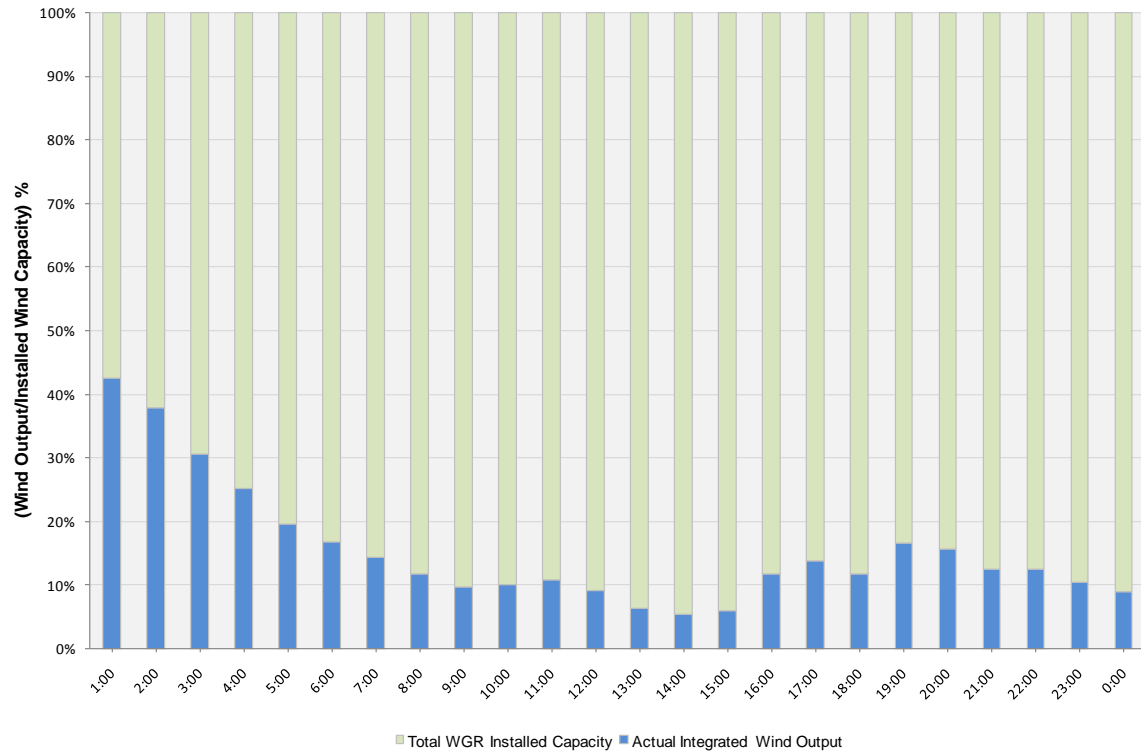
Peak Load	50,885 MW
Load Peak Hour	16
Wind Record 06/12/10	7016 MW
Max Wind value	4099 MW
Wind Peak Hour	00:09:04
Wind Penetration %	11.45

Hourly Average Actual Load vs. Actual Wind Output
09-24-2010

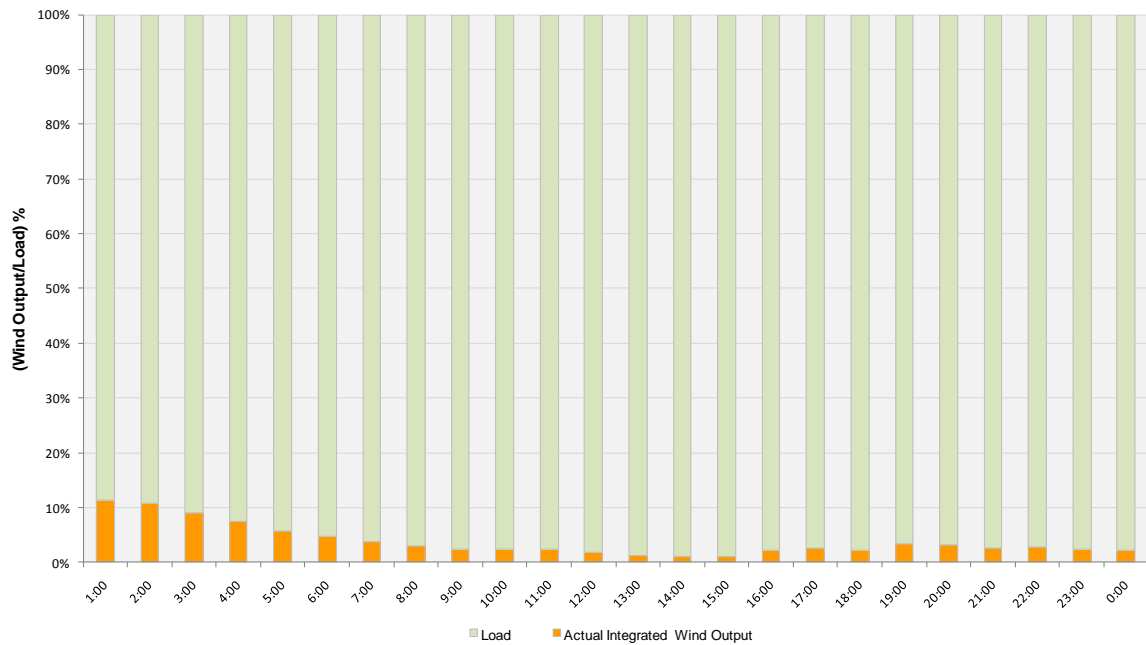




Actual Wind Output as a Percentage of the Total Installed Wind Capacity
09-24-2010



Actual Wind Output as a Percentage of the ERCOT Load
09-24-2010





ERCOT Load vs. Actual Wind Output 09/17/10 - 09/24/10

